



Australian Government

BETA

BEHAVIOURAL ECONOMICS TEAM OF
THE AUSTRALIAN GOVERNMENT

Academic Directory



© Commonwealth of Australia 2017

978-1-925362-87-9 BETA Academic Directory (DOCX)

978-1-925362-86-2 BETA Academic Directory (PDF)

Copyright Notice

With the exception of the Commonwealth Coat of Arms, this work is licensed under a Creative Commons Attribution 4.0 International licence (CC BY 4.0)

(<http://creativecommons.org/licenses/by/4.0/deed.en>).



Third party copyright

Wherever a third party holds copyright in this material, the copyright remains with that party. Their permission may be required to use the material. Please contact them directly.

Attribution

This publication should be attributed as follows: Commonwealth of Australia, Department of the Prime Minister and Cabinet, **BETA Academic Directory**.

Use of the Coat of Arms

The terms under which the Coat of Arms can be used are detailed on the following website:

<http://www.itsanhonour.gov.au/coat-arms/>.

BETA

BEHAVIOURAL ECONOMICS TEAM
OF THE AUSTRALIAN GOVERNMENT

Academic Directory

Other uses

Enquiries regarding this licence and any other use of this document are welcome at:

Managing Director

Behavioural Economics Team of Australia

Department of the Prime Minister and Cabinet

Barton ACT 2600

Email: beta@pmc.gov.au

The views expressed in this paper are those of the authors and do not necessarily reflect those of the Department of the Prime Minister and Cabinet or the Australian Government.

WHO WE ARE

We are the Behavioural Economics Team of the Australian Government, or BETA.

We are the Australian Government's first central unit applying behavioural economics to improve public policy, programs and processes. Rather than expecting people to redesign their lives around government, our work encourages people-centred design, which means: simpler, clearer and faster public services.

We use behavioural economics, science and psychology to improve policy outcomes.

Our mission is to build behavioural economics capability across the public service and drive its use in policy design by testing what works, where and in what context.

CONTENTS

Foreword	V
About BETA	VI
Academics: A – Z	VIII
Key Word Index	XII

FOREWORD

BETA's mission is to build behavioural economics capability across the Australian Public Service and drive its use in policy design by testing what works. To do this, BETA is committed to fostering links between the Australian Public Service and the behavioural economics research community, here and overseas, that will lead to better outcomes for Australians.

Research and evidence is the cornerstone of the behavioural insights movement. From the establishment of the UK "Nudge Team" which focused on translating insights from the behavioural sciences into policy design, it has been clear that coupling a more sophisticated understanding of behaviour with rigorous evaluation, particularly randomised controlled trials, has been a great formula for success. The proliferation of other similar teams across the world and in Australia has continued to draw on these evidence-based insights, making numerous improvements to policy, program and service delivery. Growing demand for this evidence has been met with a growing body of research in behavioural economics. In order to maintain the momentum of the movement, it is increasingly important to foster relationships between academia and government so that the relevant expertise reaches areas that it has the greatest capacity to benefit.

How to best link policy makers and academia is a long standing challenge. With the growing interest and demand for behavioural science, there are many opportunities to better connect the APS and academia. BETA is undertaking a range of activities to contribute to fostering better connection, creation and translation of behavioural economics research to policy. This directory forms one part of our engagement strategy. It is a useful tool to support greater engagement and facilitate well-aligned connections. Given the growth of this sector, it can be a complex and time consuming task to identify the most relevant experts for specific policy problems. The aim of this directory is to make this task simpler by cutting down transaction and search costs of finding Australian academics and experts in the fields of behavioural economics (and behavioural science more broadly).

This directory focuses on Australian academic experts, whose research has the greatest relevance to the Australian policy context. There are a number of Australian universities that are setting up dedicated behavioural economics groups with capacity to conduct field and lab experiments. Examples are the Queensland University of Technology's Behavioural Economics Group (QuBE), Monash University's Experimental Research Insights Team and Behaviour Works Group, and the University of Western Australia's collaboration with CSIRO to establish the Behavioural Economics Laboratory. Future editions of this directory may be expanded to include international experts, particularly where there is a relevant subject matter focus. This directory will be updated regularly and circulated to members of our community of practice.

The team at BETA

ABOUT BETA

We are the Behavioural Economics Team of the Australian Government, or BETA.

Rather than expecting people to redesign their lives around government, our work encourages people-centred design, which means: simpler, clearer and faster public services.

We are the Australian Government's first central unit applying behavioural economics to improve public policy.

BETA started work in PM&C in early 2016 as a joint initiative across the Australian Public Service. Working with a range of partner agencies, BETA will put real people at the centre of policy and programme design.

Headed up by Professor Michael Hiscox of Harvard University, the team will use behavioural economics, science and psychology to improve policy outcomes.

Why we need a behavioural economics team

Traditional policy makers assume people will always make the best decision possible, and have no shortage of willpower or brain power. However, research and evidence tells us this isn't always the case.

There is often a gap between what people intend to do and what they actually end up doing. For example, we know when people are in 'auto-pilot' they will often use shortcuts and prefer to rely on stereotypes. In other cases people won't act on their best intentions because they feel overloaded with choices.

That's why it's important to put real human behaviour at the centre of policy and programme design. Designing policy should be based on a sound understanding of human behaviour. This goes hand-in-hand with BETA's commitment to test those designs, building our understanding of what works and when we need to adapt our approach.

We are making sure our government policies, programmes and services reflect real decision-making and achieve the best possible outcomes for Australians.

Experience has shown that inexpensive improvements based on a better understanding of human behaviour can increase efficiency within the public service and help people put their good intentions into action. Initiatives like plain packaging of cigarettes, mysuper and pre-filled tax forms were designed with real human behaviour in mind.

In NSW, [behavioural economics](#) helped to get injured workers back to health and work more quickly by simplifying processes, using positive messaging and personal commitment techniques.

In the UK, [behavioural economics](#) helped people realise their intention to register as an organ donor.

BETA's mission

BETA's mission is to advance the wellbeing of Australians through the application and rigorous evaluation of behavioural insights to public policy and administration.

BETA fulfils its mission by pursuing four broad objectives:

- Build APS capability to apply behavioural insights to public policy and administration
- Provide advice to government on applications of behavioural insights
- Work collaboratively with partner agencies to design and deliver behavioural insights interventions
- Conduct rigorous trials and thereby contribute to a culture of evidence-based policy advice.

While we will adapt how we work in order to best fulfil our objectives and mission, several enduring principles underpin how we work:

- Publish by default: We seek, to the greatest extent possible, to be transparent in all our work: the application of behavioural insights, the evaluation of these applications, and the operation of BETA itself.
- Relationships: We seek to cultivate close relationships with behavioural insights practitioners and researchers in academia, public policy and the private sector.
- Ethics: All randomised trials will be subject to ethics review.

ACADEMICS: A - Z

A

- Anderson, Professor K 1

B

- Baranov, Ms V 2
- Bateman, Ms H 3
- Bayer, Professor R-C 4
- Biddle, Associate Professor N 5
- Binney, Associate Professor W 6
- Blijlevens, Dr J 7
- Booth, Professor A 8
- Borland, Professor J 9
- Bossaerts, Professor P 10
- Bragge, Associate Professor P 11
- Bray, PSM Mr R 12
- Breunig, Professor P 13
- Butler, Professor D 14

C

- Camilleri, Dr A 15
- Chuah, Dr S-H 16
- Creed, Professor P 17
- Curtis, Dr J 18

D

- Dodgson, Professor M 19
- Donovan, Professor R 20
- Dulleck, Professor U 21

F

- Faulkner, Dr N 22
- Fielding, Associate Professor K 23
- Fooker, Dr J 24
- Frederiks, Dr E 25

G

- Gangadharan, Professor L 26
- Garbarino, Professor E 27
- Ghafoori, Dr E 28
- Goodwin, Dr D 29
- Gordon, Associate Professor R 30
- Grafton, Professor Q 31
- Grant, Professor S 32
- Gregory, Professor B 33
- Grossman, Professor P 34

H

- Haisken-DeNew, Professor J 35
- Hall, Dr N L 36
- Harmon, Professor C 37
- Haslam, Professor A 38
- Head, Professor B 39
- Henckel, Dr T 40
- Hoffmann, Professor R 41
- Hyde, Dr M 42

J

- Jorgensen, Dr B 43

K

- Kalayci, Dr K 44
- Kashima, Professor Y 45
- Kofman, Professor P 46
- Kothe, Dr E 47
- Kyonka, Dr E 48

L

- Laban Peryman, Dr J 49
- Leibbrandt, Associate Professor A 50
- Louis, Associate Professor W 51
- Lovallo, Professor D 52

M

- Mayraz, Dr G 53
- McDonald, Emeritus Professor I 54
- McGarty, Professor C 55
- Messinis, Dr G 56
- Murawski, Dr C 57

N

- Neelim, Dr A 58
- Neumann, Professor D 59
- Newell, Professor B 60
- Newton, Dr J 61

O

- Ortmann, Professor A 62

P

- Page, Professor L 63
- Palmeira, Associate Professor M 64
- Payne, Professor A 65
- Priest, Dr N 66

R

- Reeson, Dr A 67
- Rundle-Thiele, Professor S 68
- Russell-Bennett, Professor R 69

S

- Savage, Dr D 70
- Schaffner, Dr M 71
- Seethaler, Dr R 72
- Sibly, Dr H 73
- Sinning, Associate Professor M 74
- Slonim, Professor R 75
- Smith, Associate Professor L 76

T

- Thorp, Professor S 77
- Tolchard, Dr B 78
- Torgler, Professor B 79
- Tymula, Dr A 80

V

- Vivalt, Dr E 81

W

- Wakefield, Professor M 82
- Wen, Associate Professor L 83
- Wenzel, Associate Professor M 84
- Werder, Dr O 85
- Whelan, Associate Professor S 86
- White, Professor K 87
- Whitten, Dr S 88
- Wright, Dr B 89

X

- Xiao, Associate Professor E 90

KEY WORD INDEX

Consumer Behaviour

- Behavioural Change 25, 69
- Brand Extensions 64
- Consumer Behaviour 7, 15, 21, 30, 64, 69
- Consumer Psychology 25, 27, 29
- Consumer Research 30
- Critical Marketing 30
- Customer Loyalty 69
- Loyalty Programs 64

Development

- Development 1, 2
- Innovation 13
- Innovation Adoption 7
- International Development 81
- International Trade 1, 46
- Poverty 12
- Technology and Innovation 19

Education

- Economics of Education 37, 65, 75
- Education 5, 35, 48
- Educational Choices 63
- Education, Skills and Productivity 56
- Higher Education 74
- Learning 75
- Learning Disability 78
- Student Loans 49

Employment

- Applied Labour Economics 35
- Career and Organisational Psychology 17
- Employment 13
- Employment Services 12
- Immigration 33

- Income Inequality 33
- Labour Behaviour 8
- Labour Economics 5, 9, 33, 37, 74, 86
- Migration 35
- Occupational Wellbeing 17
- Productivity 48
- Retirement Saving 3
- Unemployment 17
- Wage Structure 35
- Worker Motivation 50

Environment

- Advocacy and Policy Influence on Climate Change Science 36
- Agricultural Economics 1
- Agriculture 31
- Behaviour Change Research 36
- Climate Change 18
- Climate Change Beliefs and Action 23
- Conservation 76
- Emissions Trading Schemes 62
- Energy 15, 18, 25, 28, 31, 76
- Environment 15, 31, 61, 67, 68, 79, 88
- Environmental Behaviour 43
- Environmental Economics 26
- Environmental Protection 18
- Environmental Sustainability 23
- Fisheries 31
- Pollution 28
- Resource Economics 1, 88
- Retirement 28
- Sustainability 6, 18, 45
- Sustainable Travel 72
- Sustainable Urban Water Management 23
- Technology Assessment 36
- Urban Water Markets 73
- Waste 18
- Water 31, 76
- Wine Economics 1

Finance

- Addictions 78
- Ageing and Economic Decisions 24
- Applied Econometrics 74, 86
- Applied Economics 37, 86
- Applied Microeconomics 2, 9
- Behavioural Finance 46, 77
- Consumer Finance 57, 77
- Corporate Finance 62
- Debt 6
- Digital Economy 67
- Econometrics 79
- Ethics of Finance 46
- Extreme Economics 70
- Financial Decision-Making 15, 57
- Financial Econometrics 77
- Financial Economics 10
- Financial Well-Being 57
- Incentives 90
- Incentives and Institutions 88
- Income Management 12
- Inequality 74
- International Economics 40
- International Finance 40
- Investment and Benefit Decisions 3
- Macroeconomics 40
- Market Based Instruments 88
- Marketing 27
- Microeconomics 32, 33, 70
- Monetary Economics 40
- Neuroeconomics 10, 80
- Pricing 50
- Quantitative Finance 46
- Regulation of Financial Markets 46
- Superannuation 62, 63, 67
- Superannuation and Pensions 3, 77
- Tax 49, 67, 79
- Tax Compliance 24, 71
- Tax Evasion 4
- Tax Transfer 12
- Welfare and Income Inequality 35

Health

- Ageing Population 28
- Ageing Society 3
- Alcohol 20, 68
- Blood Donor Motivation 75
- Cancer 82
- Cardiovascular Disease 83
- Chronic Disease Management 78
- Compliance in Health 24
- Diabetes 83
- Economics of Ageing 54
- Economics of Sport 9
- Energy Conservation 43
- Evidence-Based Medicine 83
- Health 35, 47, 59, 61, 66, 85, 87
- Health Behaviours 89
- Healthcare Quality Improvement 11
- Health Communication 85
- Health Economics 2
- Health Promotion 85
- Health Psychology 82
- Health Services 69
- Health Systems 89
- Healthy Ageing 83
- Healthy Aging 7
- Healthy Eating 20, 68
- Lifespan 83
- Mental Health 78
- Nursing 47
- Nutrition 47
- Obesity 68, 83
- Obesity Prevention Campaigns 85
- Organ Donation 42
- Physical Activity 68
- Prevention in Health 24
- Psycho-Oncology 42
- Sport 59
- Stress 38
- Tobacco and Tobacco Control 82
- Water Conservation 43

Methods

- Applied Behavioural Methods 76
- Behavioural Economics 40, 44, 48, 54, 62, 70, 80, 90
- Behavioural Sciences 11, 82
- Behavioural Spillover 76
- Community-Based Participatory Research 85
- Econometric and Statistical Methods 37
- Emotion and Behaviour 76
- Evaluation 9, 13, 58
- Evidence-Based Policy 39
- Evidence Review 11
- Experimental Economics 14, 26, 44, 62, 75, 80, 90
- Experimental Finance 10, 57
- Experimental Methods in the Social Sciences 62
- Experimental Psychology 48
- Experiments for Policy 24
- Field Experiments 15, 72
- Impact Evaluations 81
- Lab Experiments 15, 21, 61, 73
- Large Databases 56
- Measurement 22
- Measurement Development 28
- Natural Experiments 21
- Panel Data 56
- Public Policy Evaluation 74
- Qualitative 66
- Quantitative 66, 85
- Rapid Review 89
- RCTs 9, 21
- Research Design 22, 28
- State-of-the-Art Applied Econometrics of Survey 56
- Statistical Software 56
- Survey and Experimental Design 27, 29
- Surveys 15, 20, 61, 72, 79
- Systematic Review 89
- Time-Series 56

Other

- Attitude Behaviour Relations 87
- Australian Economic History 9
- Behaviour in Contests 63
- Biases 49
- Choice Under Uncertainty 53
- Cognitive Limitations 4
- Cognitive Psychology 60
- Collective Action 51, 55
- Communication 82
- Competitiveness 50
- Compliance 22, 50, 84
- Consumer Protection 21
- Contingent Valuation 43
- Cooperation 50
- Corporate Social Responsibility 6
- Corporate Strategies for Innovation 19
- Creativity 38
- Crime 84
- Decision Making 49, 60, 70
- Decision Neuroscience 10, 57
- Decision Theory 14, 32
- Design Aesthetics 7
- Early Intervention and Prevention 39
- Economic Institutions 26
- Economics and Psychology 2
- Experts 21
- Forgiveness 84
- Game Theory 14, 32, 62, 63
- Goal Setting 17
- Happiness 53
- Heuristics 64
- Industrial Organisation 44, 73
- Internet Retailing 27, 29
- Labelling 15
- Law and Economics 65
- Leadership 38
- Life and Death Economics 70
- Market Design 67
- Marketing 29
- Motivation and Goals 15
- Non-Market Valuation 88

- Online Environments 41
- Organisational and Social Psychology 25
- Over-Confidence 53
- Policy Innovation 39
- Political Choices 63
- Political Psychology 55
- Prospect Theory 49
- Psychology 47, 51, 59
- Psychometrics 17
- Public Economics 65, 74
- Public Policy 3, 5, 81, 86
- Research Productivity 78
- Risk and Uncertainty 60
- Risk Attitudes 63
- Risk Taking 34
- Self-Regulatory Processes 17
- Sense of Place 43
- Service Delivery Innovation 39
- Social Design 7
- Social Psychology 55
- Stakeholder Dialogue 11
- Strategic Decision Making 52
- Trust 75
- Tyranny 38
- Wicked or Complex Problems 39
- Wishful-Thinking 53
- Written Communication 22

Social

- Altruism 34, 87
- Antisocial Behaviour 34
- Charitable Behaviour 75
- Charitable Giving 34, 58
- Charities and not-for Profits 62
- Childcare 13
- Children 66
- Community Engagement 42
- Cross-Cultural Experimental Economics 16
- Cultural Dynamics 45
- Culture 8
- Culture and Social Identity 41
- Discrimination 16, 58

- Economics of Charities 65
- Economics of Culture 41
- Families 13
- Gambling 15, 78
- Gender 8, 34, 50, 66
- Group Processes 38
- Indigenous 5, 66
- Intergroup Relations 55
- Interpersonal Communication 45
- Multiculturalism 22
- Prosocial Behaviour 34
- Punishment 58
- Reciprocity 4
- Religion 41
- Social Identity 16, 23, 55, 58, 87
- Social Inclusion 7, 22, 39
- Social Influence and Persuasion in Online Environments 16
- Social Marketing 6, 30, 68, 69, 85
- Social Networks 19, 45
- Social Norms 23, 49, 51, 90
- Social Norms and Punishment 58
- Social Perceptions 64
- Social Policy 12
- Social Preferences 4, 63
- Social Psychology 38, 45, 87
- Volunteerism 27, 29, 42
- Well-Being 30

KYM ANDERSON

PROFESSOR

University of Adelaide

SUMMARY

Kym Anderson is the George Gollin Professor of Economics, foundation Executive Director of the Wine Economics Research Centre, and formerly foundation Executive Director of the Centre for International Economic Studies at the University of Adelaide, where he has been affiliated since 1984. He is also Professor of Economics, Arndt-Corden Dept of Economics, Australian National University.

He is on the editorial board of several international academic journals, including as Co-editor of CUP's Journal of Wine Economics (see www.wine-economics.org).

He has spent periods of leave at Korea's International Economics Institute 1980-81, the Australian Department of Trade, Stockholm University's Institute for International Economic Studies 1988, the GATT (now WTO) Secretariat in Geneva 1990-92, and the Research Group of the World Bank in Washington DC 2004-07



KEY WORDS (POLICY AREAS AND METHODOLOGY EXPERTISE)

- Agricultural Economics
- Development
- International Trade
- Resource Economics
- Wine Economics

ADDITIONAL INFORMATION

kym.anderson@adelaide.edu.au

[More information 1](#)

[More information 2](#)

VICTORIA BARANOV

LECTURER OF ECONOMICS, FACULTY OF BUSINESS AND ECONOMICS

University of Melbourne

SUMMARY

Victoria is an economist who specialises in development and behavioural economics. Having completed her PhD at the University of Chicago, she took up a position at the University of Melbourne.

She has conducted research into various issues including: the impacts of treating maternal depression, how psychological well-being impacts economic decision-making, and how HIV treatment affects health and economic outcomes.



KEY WORDS (POLICY AREAS AND METHODOLOGY EXPERTISE)

- Applied Microeconomics
- Development
- Economics and Psychology
- Health Economics

ADDITIONAL INFORMATION

victoria.baranov@unimelb.edu.au

[More information](#)

HAZEL BATEMAN

HEAD OF THE SCHOOL OF RISK AND ACTUARIAL

University of NSW

SUMMARY

Hazel has research interests in the areas of public and private provision for retirement. Her current research investigates retirement saving, investment and benefit decisions; the structure, governance and performance of pension and superannuation funds; and effective public policy for an ageing society.

Prior to joining the University of New South Wales, Hazel worked as an economist in the Australian Treasury. Hazel has been a consultant on retirement income issues to a range of Australian and international organisations including the OECD, the World Bank, the Social Insurance Administration (China), APEC and KIHASA. Hazel is a member of UniSuper's Consultative Committee and in 2012-13 was a member of the Australian Government's Superannuation Roundtable.



KEY WORDS (POLICY AREAS AND METHODOLOGY EXPERTISE)

- Ageing Society
- Investment and Benefit Decisions
- Public Policy
- Retirement Saving
- Superannuation and Pensions

ADDITIONAL INFORMATION

h.bateman@unsw.edu.au

[More information](#)

RALPH BAYER

DIRECTOR OF ADELAIDE LABORATORY FOR EXPERIMENTAL ECONOMICS (ADLAB) AND PROFESSOR AT THE SCHOOL OF ECONOMICS

University of Adelaide

SUMMARY

Ralph-C Bayer joined Adelaide University after completing his PhD at the London School of Economics. Professor Bayer has established and is now the Director of AdLab – the Adelaide Laboratory for Experimental Economics, one of the first experimental laboratories for economics in Australia.

Prof Bayer is particularly interested in explaining why humans' behaviour regularly deviates from what standard game theory predicts. His experimental studies focus on limited cognitive abilities, social preferences and reciprocity. In more traditional work Prof Bayer has worked extensively on topics related to tax evasion of individuals and firms and on questions related to market structure and conduct.



KEY WORDS (POLICY AREAS AND METHODOLOGY EXPERTISE)

- Cognitive Limitations
- Social Preferences
- Reciprocity
- Tax Evasion

ADDITIONAL INFORMATION

ralph.bayer@adelaide.edu.au

[More information](#)

NICHOLAS BIDDLE

SENIOR FELLOW AT THE CENTRE FOR ABORIGINAL ECONOMIC POLICY RESEARCH (CAEPR) AND
DEPUTY DIRECTOR OF THE ANU CENTRE FOR SOCIAL RESEARCH AND METHODS UNIVERSITY

Australian National University

SUMMARY

Nicholas Biddle is a quantitative social scientist, with extensive expertise in Indigenous policy. His research has explored among other topics, the relationship between education participation for Indigenous Australians, measures of Indigenous wellbeing across the life course, and the internal mobility of Indigenous people.

His other areas of interest include the economics of income inequality and poverty, immigration, and gender.



KEY WORDS (POLICY AREAS AND METHODOLOGY EXPERTISE)

- Education
- Indigenous
- Labour Economics
- Public Policy

ADDITIONAL INFORMATION

nicholas.biddle@anu.edu.au

[More information](#)

WAYNE BINNEY

ASSOCIATE PROFESSOR, FACULTY OF BUSINESS AND LAW

University of Adelaide

SUMMARY

Wayne Binney is an Associate Professor of Marketing at Deakin University. Dr Binney's research interests include corporate social responsibility, social marketing and sustainability in management.

Of particular note is Dr Binney's work in social marketing looking at issues around the effectiveness of different kinds of negative appeals as persuasion techniques, and his work on consumer debt and what social marketing can offer to help indebted consumers try to escape this problem.



KEY WORDS (POLICY AREAS AND METHODOLOGY EXPERTISE)

- Corporate Social Responsibility
- Debt
- Social Marketing
- Sustainability

ADDITIONAL INFORMATION

wayne.binney@deakin.edu.au

[More information](#)

DR JANNEKE BLIJLEVENS

SENIOR LECTURER IN EXPERIMENTAL METHODS

RMIT University

SUMMARY

Dr Janneke Blijlevens is a Senior Lecturer in Experimental Methods at RMIT University.

Her research covers areas such as product (design) perception and evaluation by consumers, the social roles that products can play to consumers, how to design products for social change, and psychological factors influencing the adoption of highly innovative products (e.g., health aids) by consumers



KEY WORDS (POLICY AREAS AND METHODOLOGY EXPERTISE)

- Consumer Behaviour
- Design Aesthetics
- Healthy Aging
- Innovation Adoption
- Social Design
- Social Inclusion (Integration/Discrimination)

ADDITIONAL INFORMATION

janneke.blijlevens@rmit.edu.au

[More information](#)

ALISON BOOTH

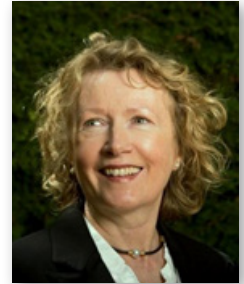
PROFESSOR OF ECONOMICS AND ANU PUBLIC POLICY FELLOW AND COLLEGE OF ASIA AND THE PACIFIC AND COLLEGE OF BUSINESS AND ECONOMICS

Australian National University

SUMMARY

Alison Booth's current research is in three broad areas: (i) cultural influences on economic preferences and their impact on economic outcomes; (ii) the economics of gender; (iii) trade union effects on the welfare of rural-urban migrants in China.

Her work focuses on labour and behavioural economics, with a particular interest in experimental methods.



KEY WORDS (POLICY AREAS AND METHODOLOGY EXPERTISE)

- Culture
- Gender
- Labour Behaviour

ADDITIONAL INFORMATION

alison.booth@anu.edu.au

[More information](#)

JEFF BORLAND

TRUBY WILLIAMS PROFESSOR OF ECONOMICS, DEPARTMENT OF ECONOMICS

University of Melbourne

SUMMARY

Jeff has worked on evaluations of a range of labour market programs and on several RCTs of education and employment-related interventions. His main research interests are analysis of the operation of labour markets in Australia, program and policy evaluation and design, Australian economic history, and sports economics.



KEY WORDS (POLICY AREAS AND METHODOLOGY EXPERTISE)

- Applied Microeconomics
- Australian Economic History
- Economics of Sport
- Evaluation
- Labour Economics
- RCTs

ADDITIONAL INFORMATION

jib@unimelb.edu.au

[More information](#)

PETER BOSSAERTS

REDMOND BARRY DISTINGUISHED PROFESSOR, THE FLOREY INSTITUTE
FOR NEUROSCIENCE AND MENTAL HEALTH

University of Melbourne

SUMMARY

Professor Bossaerts pioneered the use of controlled experimentation (with human participants) in the study of financial markets, and helped bring decision theory and game theory to cognitive neuroscience, which led to the emerging fields of neuro-economics, decision neuroscience and computational neuropsychiatry. His work deals with decision making under risk — focusing on “financial” risk.



KEY WORDS (POLICY AREAS AND METHODOLOGY EXPERTISE)

- Decision Neuroscience
- Experimental Finance
- Financial Economics
- Neuroeconomics

ADDITIONAL INFORMATION

peter.bossaerts@unimelb.edu.au

[More information](#)

PETER BRAGGE

ASSOCIATE PROFESSOR, SENIOR RESEARCH FELLOW, BEHAVIOURWORKS

Monash University

SUMMARY

Associate Professor Peter Bragge is an applied behavioural researcher at BehaviourWorks Australia (BWA), part of the Monash Sustainable Development Institute. His approach to behaviour change focuses on evidence review and in-depth stakeholder consultation to define, understand and change practice, research and policy.

He has led projects for a variety of organisations including The NSW Environment Protection Authority, The Victorian Department of Health and Human Services and The Victorian Transport Accident Commission.

Peter draws upon 10 years' experience as a physiotherapist in leading BWA's health research. His publication highlights include The Lancet and Lancet Neurology.



KEY WORDS (POLICY AREAS AND METHODOLOGY EXPERTISE)

- Behavioural Sciences
- Evidence Review
- Healthcare Quality Improvement
- Stakeholder Dialogue

ADDITIONAL INFORMATION

peter.bragge@monash.edu

[More information](#)

ROB BRAY PSM

RESEARCH FELLOW, ANU CENTRE FOR SOCIAL RESEARCH AND METHODS

Australian National University

SUMMARY

Prior to joining the ANU Rob had a long APS career in a range of social policy and related departments as well as consulting for the NZ government and the OECD.

At the ANU he has undertaken research and evaluation tasks in the areas of employment services, income management, young carers, retirement savings and financial management including behaviour aspects. His key areas of research include the Australian tax-transfer system, income distribution and well-being and the minimum wage.



KEY WORDS (POLICY AREAS AND METHODOLOGY EXPERTISE)

- Employment Services
- Income Management
- Poverty
- Social Policy
- Tax Transfer

ADDITIONAL INFORMATION

rob.bray@anu.edu.au

[More information](#)

ROBERT BREUNIG

PROFESSOR, CRAWFORD SCHOOL OF PUBLIC POLICY

Australian National University

SUMMARY

Professor Breunig has worked closely with the Australian government over the past 16 years to design, implement and evaluate policy. His main interests are in child care, government support to individuals, families and businesses, employment and innovation. He has designed and conducted randomised control trials with the DSS and Employment. He has worked with sensitive administrative data with the ABS, the ATO, Industry and the Productivity Commission.



Professor Breunig combines a strong academic background with expert knowledge of econometric and statistical modelling with a deep commitment to quality public policy and a nuanced understanding of the environment in which public servants strive to produce better evidence and better policy.

At the ANU he has undertaken research and evaluation tasks in the areas of employment services, income management, young carers, retirement savings and financial management including behaviour aspects. His key areas of research include the Australian tax-transfer system, income distribution and well-being and the minimum wage.

KEY WORDS (POLICY AREAS AND METHODOLOGY EXPERTISE)

- Childcare
- Employment
- Evaluation
- Families
- Innovation

ADDITIONAL INFORMATION

robert.breunig@anu.edu.au

[More information](#)

DAVID BUTLER

PROFESSOR, ECONOMICS AND FINANCE GROUP

Murdoch University

SUMMARY

David Butler studied for his Bachelor and Masters degrees at the University of York, UK, and obtained his PhD from UWA. He has previously taught at UWA and the University of Arizona. His research interests are in experimental economics, decision theory and behavioural game theory. He is a former President of the WA branch of the Australian Economic Society.

His research integrates techniques from such disciplines as experimental and cognitive psychology, evolutionary theory and philosophy into experimental economics research and behavioural game theory.

Particular research interests include consequences of imprecise preferences and pro-social behaviour in experimental games. His teaching includes a behavioural economics class for public policy students.



KEY WORDS (POLICY AREAS AND METHODOLOGY EXPERTISE)

- Decision Theory
- Experimental Economics
- Game Theory

ADDITIONAL INFORMATION

D.Butler@murdoch.edu.au

[More information](#)

Australian National University

SUMMARY

Dr Adrian Camilleri is a consumer psychologist who uses experimental methods to understand, explain, and predict how people make judgments and decisions. Through his research, he attempts to understand how people's choices are influenced by the way that information is presented and reveal what information formats produce the best choices.

Adrian's research interests include: human judgment and decision-making; consumer behaviour; decisions made under risk and uncertainty; behavioural economics; managerial decision-making; sustainable decision-making.



KEY WORDS (POLICY AREAS AND METHODOLOGY EXPERTISE)

- Consumer Behaviour
- Energy
- Environment
- Field Experiments
- Financial Decision-Making
- Gambling
- Lab Experiments
- Labelling
- Motivation and Goals
- Surveys

ADDITIONAL INFORMATION

adrian.camilleri@rmit.edu.au

[More information](#)

DR SWEE-HOON CHUAH

SENIOR LECTURER, ECONOMICS (EXPERIMENTAL METHODS)

RMIT University

SUMMARY

Dr Swee-Hoon Chuah is a senior lecturer in Economics (Experimental Methods) at RMIT University.

Her research interest is in cross-cultural experimental economics where she investigates the impact of cultural variables such as race and religion on economic behaviour. For example, her research has found that religiosity and fundamentalism have no direct effect on intergroup cooperation, but they amplify racial and religious intergroup effects, and that religion operates indirectly through social identities and religious affiliation, which are used as a basis for discrimination.

She also uses experiments to study behaviour relating to influence and persuasion in online environments.



KEY WORDS (POLICY AREAS AND METHODOLOGY EXPERTISE)

- Cross-Cultural Experimental Economics
- Discrimination
- Social Identity
- Social Influence and Persuasion in Online Environments

ADDITIONAL INFORMATION

sweehoon.chuah@rmit.edu.au

[More information](#)

PETER CREED

PROFESSOR, SCHOOL OF APPLIED PSYCHOLOGY

Griffith University

SUMMARY

Peter's research areas are career and organisational psychology, with particular interests in goal setting and self-regulation.

He is working with PhD students researching career compromise, career calling, self-regulation and organisational fit, family influences on career development, and work-life balance.

Recent projects were a national, longitudinal study of career decision-making and choice in Australian medical students and an evaluation of the career development of youth in State care.

He is a member of GU's Behavioural Basis of Health Research Centre.



KEY WORDS (POLICY AREAS AND METHODOLOGY EXPERTISE)

- Career and Organisational Psychology
- Goal Setting
- Occupational Wellbeing
- Psychometrics
- Self-Regulatory Processes
- Unemployment

ADDITIONAL INFORMATION

p.creed@griffith.edu.au

[More information](#)

DR JIM CURTIS

SENIOR RESEARCH FELLOW, BEHAVIOURWORKS

Monash University

SUMMARY

Dr Jim Curtis is a Senior Research Fellow at BehaviourWorks Australia, Monash University.

His research focuses on using multiple disciplines to understand individual and organisational behaviour in policy areas such as energy efficiency, waste reduction, environmental protection, climate change, and environmental education. This has included working closely with target audiences such as low income households, schools, SMEs, environmental compliance officers, farmers, building facility managers, landfill operators, energy auditors, and government program teams.

Jim is also interested in bringing together the complementary contributions of scientific research, practical implementation knowledge, and political judgement to inform the realisation and adaptation of behaviour change programs.



KEY WORDS (POLICY AREAS AND METHODOLOGY EXPERTISE)

- Climate Change
- Energy
- Environmental Protection
- Sustainability
- Waste

ADDITIONAL INFORMATION

james.curtis@monash.edu

[More information](#)

MARK DODGSON

DIRECTOR, TECHNOLOGY AND INNOVATION MANAGEMENT CENTRE,
UQ BUSINESS SCHOOL

University of Queensland

SUMMARY

Professor Dodgson's research interests are in the areas of corporate strategies and government policies for technology and innovation. His focus is on how the innovation process is changing, and what this means for firms, governments and research organizations.

Other research interests include studying the role of science in services innovation; innovation in cities; the consumption of innovation; dynamic social networks; innovation in complex projects; theory of innovation policy; and the life of Josiah Wedgwood (1730-1795).



KEY WORDS (POLICY AREAS AND METHODOLOGY EXPERTISE)

- Corporate Strategies for Innovation
- Social Networks
- Technology and Innovation

ADDITIONAL INFORMATION

m.dodgson@business.uq.edu.au

[More information](#)

ROB DONOVAN

PROFESSOR, HEALTH PSYCHOLOGY

Curtin University

SUMMARY

Professor Rob Donovan is the former Director of the Centre for Behavioural Research in Cancer Control and continues work at the Centre on a part-time basis.

He is currently Professor of Behavioural Research and Professor of Social Marketing. Professor Donovan's research explores the role of advertising in influencing consumer behaviour on food and alcohol consumption.



KEY WORDS (POLICY AREAS AND METHODOLOGY EXPERTISE)

- Alcohol
- Healthy Eating
- Surveys

ADDITIONAL INFORMATION

Robert.donovan@cbs.curtin.edu.au

[More information](#)

University of Queensland

SUMMARY

Uwe's research uses economic theory to help consumers to choose suppliers who are less likely to rip them off. Financial Decisions and Regulation as well as Education are the areas of application of Behavioural Economics where Uwe has collaborated with commonwealth and state government as well as the non-profit sector.

Uwe has worked with ASIC and the ATO using Laboratory Experiments for policy design and evaluation. With the department of Education and IP Australia Uwe has worked on applications studying incentives for employees and service providers.

Uwe was part of a researcher team running an RCT on Engaging Aboriginal and Torres Strait Islander students at school.



KEY WORDS (POLICY AREAS AND METHODOLOGY EXPERTISE)

- Consumer Behaviour
- Consumer Protection
- Experts
- Lab Experiments
- Natural Experiments (analysis of administrative data)
- RCTs

ADDITIONAL INFORMATION

uwe.dulleck@qut.edu.au

[More information](#)

DR NICK FAULKNER

RESEARCH FELLOW, BEHAVIOURWORKS

Monash University

SUMMARY

Dr Nicholas Faulkner is a Research Fellow at BehaviourWorks Australia, Monash University. His research has investigated behaviours across a broad range of policy areas, including: social inclusion and racism, charitable giving, business and citizens' compliance with requests from government regulators, and trust in government.

He is particularly interested in designing rigorous trials to test the effects of behavioural interventions, and using routinely-collected big data to understand the drivers of behavioural problems.



KEY WORDS (POLICY AREAS AND METHODOLOGY EXPERTISE)

- Compliance
- Measurement
- Multiculturalism
- Research Design
- Social Inclusion
- Written Communication

ADDITIONAL INFORMATION

nicholas.faulkner@monash.edu

[More information](#)

KELLY FIELDING

ASSOCIATE PROFESSOR VC'S RESEARCH AND TEACHING FELLOW,
SCHOOL OF COMMUNICATION AND ARTS

University of Queensland

SUMMARY

Kelly Fielding's research focuses broadly on understanding the social and psychological determinants of environmental sustainability. She seeks to understand environmental decisions and behaviours and to develop communication and behaviour change strategies that can promote greater environmental sustainability.

A key focus of her current research is on sustainable urban water management, specifically, how we can engage communities with this issue, how we can communicate about new water technologies such as recycled water, how we can promote water conservation, and how we can understand and communicate about drinking water supplies.

Her research is also focused on understanding climate change beliefs as well as identifying ways to address climate change scepticism and inaction.



KEY WORDS (POLICY AREAS AND METHODOLOGY EXPERTISE)

- Climate Change Beliefs and Action
- Environmental Sustainability
- Social Identity
- Social Norms
- Sustainable Urban Water Management

ADDITIONAL INFORMATION

k.fielding@uq.edu.au

[More information](#)

DR JONAS FOOKEN

POSTDOCTORAL RESEARCH FELLOW, CENTRE FOR BUSINESS
AND ECONOMICS OF HEALTH

University of Queensland

SUMMARY

Jonas is a Research Fellow with the University of Queensland's Centre for the Business and Economics of Health.

Before joining UQ, Jonas worked for the Behavioural Economics Team of the European Commission. He is interested in applying behavioural economic insights to public policy in taxation, health and labour economics.

Jonas currently works on behavioural topics of tax compliance and public health. He also studies the consequences of population ageing for society. He combines theory and evidence, mainly using experiments, including field and laboratory experiments that serve as a cheap and non-invasive way to proof a concept and determine mechanisms that work best.



KEY WORDS (POLICY AREAS AND METHODOLOGY EXPERTISE)

- Ageing and Economic Decisions
- Compliance in Health
- Experiments for Policy
- Prevention in Health
- Tax Compliance

ADDITIONAL INFORMATION

j.fooken@uq.edu.au

[More information](#)

DR ELISHA FREDERIKS

RESEARCH SCIENTIST

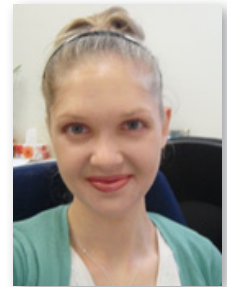
CSIRO

SUMMARY

Dr Elisha Frederiks is a Research Scientist within the CSIRO's Adaptive Urban and Social Systems program. She is also registered as an Organisational Psychologist with the Psychology Board of Australia.

At CSIRO, Elisha specialises in applying key principles from behavioural economics and psychology to investigate various social science challenges and opportunities, particularly in the residential energy domain.

A key focus of her work is designing cost-effective and scalable solutions to shift consumer decision-making behaviour in positive ways – for example, towards greater efficiency, productivity and sustainability – then scientifically testing the impact of such solutions in real-world settings via randomised controlled trials.



KEY WORDS (POLICY AREAS AND METHODOLOGY EXPERTISE)

- Behavioural Change
- Consumer Psychology
- Energy
- Organisational and Social Psychology

ADDITIONAL INFORMATION

Elisha.Frederiks@csiro.au

[More information](#)

LATA GANGADHARAN

PROFESSOR, DEPARTMENT OF ECONOMICS

University of Queensland

SUMMARY

Lata is an experimental economist. She has conducted experiments to understand: attitudes towards peer sanctioning, incentives in environmental markets, propensity for dishonesty, corruption and charitable giving, behavioural biases towards leaders and gender differences in leadership. She is Editor of the journal, Experimental Economics.



KEY WORDS (POLICY AREAS AND METHODOLOGY EXPERTISE)

- Economic Institutions
- Environmental Economics
- Experimental Economics

ADDITIONAL INFORMATION

Lata.Gangadharan@monash.edu

[More information](#)

[MERIT](#)

ELLEN GARBARINO

PROFESSOR, THE UNIVERSITY OF SYDNEY BUSINESS SCHOOL

CSIRO

SUMMARY

Ellen Garbarino is a Professor of marketing. Her research addresses the intersection of psychology and economics interact in human decision making. Her recent research focuses on pro-social behaviour, especially in the context of blood donations.

Earlier research has looked into issues such as donations to charity, credit card use, internet retailing and arts marketing. It has explored such issue as risk taking, commitment, trust, dishonesty, and perceptions of fairness.

She has worked with for profit and non-profit and large and small organisations. Her research typically employs surveys and lab and field experiments.



KEY WORDS (POLICY AREAS AND METHODOLOGY EXPERTISE)

- Consumer Psychology
- Internet Retailing
- Marketing
- Survey and Experimental Design
- Volunteerism

ADDITIONAL INFORMATION

ellen.garbarino@sydney.edu.au

[More information](#)

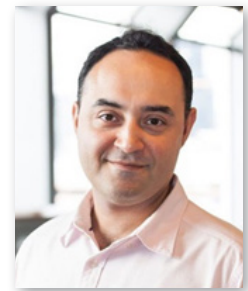
DR ERAJ GHAFOORI

RESEARCH FELLOW, BEHAVIOURWORKS

Monash University

SUMMARY

Dr Eraj Ghafoori is a researcher at BehaviourWorks Australia, Monash University. His research activities are focused on policies and regulations concerned with energy consumption, environmental pollution prevention and retirement. Currently, Eraj is actively involved in research aiming to understand public's behaviour and attitude towards retirement and impacts on relevant policies and regulations.



KEY WORDS (POLICY AREAS AND METHODOLOGY EXPERTISE)

- Ageing Population
- Energy
- Measurement Development
- Pollution
- Research Design
- Retirement

ADDITIONAL INFORMATION

eraj.ghafoori@monash.edu

[More information](#)

DR DENISE GOODWIN

PROFESSOR, RESEARCH FELLOW, BEHAVIOURWORKS

Monash University

SUMMARY

Dr Denise Goodwin is a Research Fellow at BehaviourWorks Australia, Monash University. She has a particular interest in the application of systems thinking for tackling complex social problems. Recently this has been applied to organisational and employee behaviour change to support wider societal change. Her research spans across a wide range of policy areas including clinical and preventative health, sport, sustainability, childhood poverty and workers compensation.



KEY WORDS (POLICY AREAS AND METHODOLOGY EXPERTISE)

- Consumer Psychology
- Internet Retailing
- Marketing
- Survey and Experimental Design
- Volunteerism

ADDITIONAL INFORMATION

denise.goodwin@monash.edu

[More information](#)

ROSS GORDON

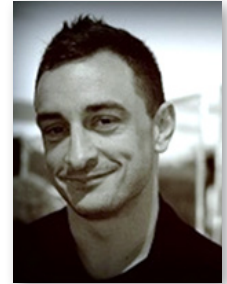
ASSOCIATE PROFESSOR, DEPARTMENT OF MARKETING AND MANAGEMENT

Macquarie University

SUMMARY

Ross is an Associate Professor in Marketing at Macquarie University in Sydney. His work focuses on social issues and social change, through a critical, reflexive and multi-perspective lens. His particular expertise lies in social marketing, consumer cultures, and critical marketing teaching and research. He has been a principal or named investigator on projects attracting over \$6.5m in research funds in Australia, UK, Europe and India.

Ross has extensive experience managing and conducting research using multiple methodologies including longitudinal quantitative surveys, systematic reviews and meta-analyses, focus groups, depth interviews, observation research, content and narrative discourse analysis, and cognitive neuroscience.



KEY WORDS (POLICY AREAS AND METHODOLOGY EXPERTISE)

- Consumer Behaviour
- Consumer Research
- Critical Marketing
- Social Marketing
- Well-Being

ADDITIONAL INFORMATION

ross.gordon@mq.edu.au

[More information](#)

QUENTIN GRAFTON

PROFESSOR, CRAWFORD SCHOOL OF PUBLIC POLICY

Australian National University

SUMMARY

Professor Grafton is an expert in water economics, including behaviours related to water consumption. He also has significant interest in both renewable and non-renewable resources, and the economics of energy. He has previously worked in the public service as the Chief Economist and Executive Director of the Australian Bureau of Resources and Energy Economics.



KEY WORDS (POLICY AREAS AND METHODOLOGY EXPERTISE)

- Agriculture
- Energy
- Environment
- Fisheries
- Water

ADDITIONAL INFORMATION

quentin.grafton@anu.edu.au

[More information](#)

SIMON GRANT

PROFESSOR, SCHOOL OF ECONOMICS

Australian National University

SUMMARY

Professor Simon is the John C. Harsanyi Chair of Economics at the Research School of Economics in the ANU. He is an Elected Fellow of: the Econometric Society, the Australian Academy of Social Sciences and The Society for the Advancement of Economic Theory.

Professor Grant's research interests include modelling boundedly-rational decision makers with limited awareness in the presence of uncertainty, and applying these models to economic settings involving strategic interactions and social choice.



KEY WORDS (POLICY AREAS AND METHODOLOGY EXPERTISE)

- Decision Theory
- Microeconomics
- Game Theory

ADDITIONAL INFORMATION

Simon.Grant@anu.edu.au

[More information](#)

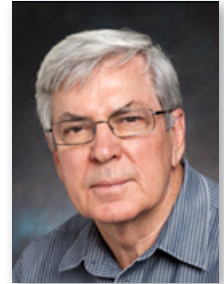
BOB GREGORY

EMERITUS PROFESSOR, RESEARCH SCHOOL OF ECONOMICS

Australian National University

SUMMARY

Professor Gregory has made major contributions to the development of economic policy in Australia. His research has explored the impact of Australia's mining boom on living standards, as well as the effect of public policies on Australia's gender wage gaps, migrant employment outcomes, and welfare payments.



KEY WORDS (POLICY AREAS AND METHODOLOGY EXPERTISE)

- Labour Economics
- Immigration
- Income Inequality
- Microeconomics

ADDITIONAL INFORMATION

bob.gregory@anu.edu.au

[More information](#)

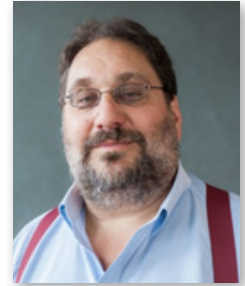
PHILIP GROSSMAN

PROFESSOR, DEPARTMENT OF ECONOMICS

Australian National University

SUMMARY

Professor Grossman's research has focussed on education, taxation, and charitable giving. He is widely experienced in running lab experiments, as well as field experiments. Philip is also a member of MERIT – the Monash Experimental Research Insights Team, a group of academics that collaborates with governments to experimentally test policy options.



KEY WORDS (POLICY AREAS AND METHODOLOGY EXPERTISE)

- Altruism
- Antisocial Behaviour
- Charitable Giving
- Gender
- Prosocial Behaviour
- Risk Taking

ADDITIONAL INFORMATION

Philip.Grossman@monash.edu

[More information](#)

[MERIT](#)

JOHN HAIKEN-DENEW

PROFESSORIAL, RESEARCH FELLOW, MELBOURNE INSTITUTE
OF APPLIED ECONOMIC AND SOCIAL RESEARCH

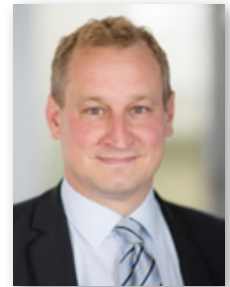
University of Melbourne

SUMMARY

Prof. Dr. John P. Haiken-DeNew is Professorial Research Fellow and Deputy Director (Projects) at the Melbourne Institute of Applied Economic and Social Research, University of Melbourne, Australia. His research interests include: education, health, competition policy, applied labour economics, applied micro econometrics, wage structure, migration, welfare and income inequality.

His previous administrative positions include Deputy Director, Associate Dean Research and Associate Dean Research Training for the Faculty of Business and Economics at the University of Melbourne.

Professor Haiken-DeNew has been published in many top ranking journals including American Economic Review, Review of Economics and Statistics, Economic Journal, and many others.



KEY WORDS (POLICY AREAS AND METHODOLOGY EXPERTISE)

- Applied Labour Economics
- Education
- Health
- Migration
- Wage Structure
- Welfare and Income Inequality

ADDITIONAL INFORMATION

johnhd@unimelb.edu.au

[More information](#)

DR NINA LANSBURY HALL

PROGRAM MANAGER, GLOBAL CHANGE INSTITUTE'S SUSTAINABLE WATER PROGRAM

University of Queensland

SUMMARY

Dr Nina Lansbury Hall manages the Sustainable Water program at the Global Change Institute, with the aim of catalysing cross-disciplinary projects to respond to complex issues around the sustainable and integrated management, treatment and use of water with social, environmental and economic considerations.

Nina brings an interdisciplinary background to the role, after working in environmental and social issues in research and non-government organisations. Before joining the Global Change Institute, Nina was a research scientist at CSIRO, conducting social research on environmental issues, particularly around energy efficiency and energy technologies.



KEY WORDS (POLICY AREAS AND METHODOLOGY EXPERTISE)

- Advocacy and Policy Influence on Climate Change Science
- Behaviour Change Research (energy consumption)
- Technology Assessment (energy tech and climate change science)

ADDITIONAL INFORMATION

n.hall2@uq.edu.au

[More information](#)

COLM HARMON

PROFESSOR, HEAD OF SCHOOL, ECONOMICS

University of Sydney

SUMMARY

Colm Harmon's main research interests are in the economics of education, labour economics and applied economics policy and he has, together with colleagues, published papers in journals such as the American Economic Review, Economic Journal, Economica, Economics of Education Review, Economics Inquiry, European Economic Review, Fiscal Studies, Health Economics, Journal of the European Economic Association, Journal of the Royal Statistical Society, and Labour Economics.

He is currently an Associate Editor of Economics of Education Review.



KEY WORDS (POLICY AREAS AND METHODOLOGY EXPERTISE)

- Applied Economics
- Econometric and Statistical Methods
- Economics of Education
- Labour Economics

ADDITIONAL INFORMATION

colm.harmon@sydney.edu.au

[More information](#)

ALEX HASLAM

PROFESSOR OF PSYCHOLOGY AND ARC LAUREATE FELLOW,
SCHOOL OF PSYCHOLOGY

University of Queensland

SUMMARY

Prof Haslam's research focuses on the study of group and identity processes in organisational, social, and clinical contexts. His research activities fall into 4 streams:

1. Psychology in organizations — with an emphasis on the contribution of groups and group membership to leadership, motivation, creativity, communication, decision-making, and productivity.
2. The social psychology of stereotyping, prejudice, and tyranny — exploring the role of social identity and self-categorization in shaping the dynamics of intergroup relations and conflict.
3. Social processes in health and well-being — looking at the contribution of group life to stress, depression, and resistance in vulnerable populations.
4. Research methodology — focusing on issues of research design, ethics, and uncertainty management.



KEY WORDS (POLICY AREAS AND METHODOLOGY EXPERTISE)

- Creativity
- Group Processes
- Leadership
- Social Psychology
- Stress
- Tyranny

ADDITIONAL INFORMATION

a.haslam@uq.edu.au

[More information](#)

BRIAN HEAD

PROFESSOR, PUBLIC POLICY, SCHOOL OF POLITICAL SCIENCE AND INSTITUTE
FOR SOCIAL SCIENCE RESEARCH

University of Queensland

SUMMARY

Professor Brian Head joined the University of Queensland in 2007 after holding senior roles in government, universities, and the non-government sector. He is the author or editor of several books and numerous articles on public management, governance, social issues and environmental policy.

His major interests are evidence-based policy, program evaluation, early intervention and prevention, collaboration and consultation, service delivery, accountability and leadership.

He has undertaken consultancies on program evaluation, policy review and, organisational performance, and good governance processes for governmental, academic and NGO bodies



KEY WORDS (POLICY AREAS AND METHODOLOGY EXPERTISE)

- Early Intervention and Prevention
- Evidence-Based Policy
- Policy Innovation
- Service Delivery Innovation
- Social Inclusion
- Wicked or Complex Problems

ADDITIONAL INFORMATION

brian.head@uq.edu.au

[More information](#)

DR TIMO HENCKEL

LECTURER, RESEARCH SCHOOL OF ECONOMICS

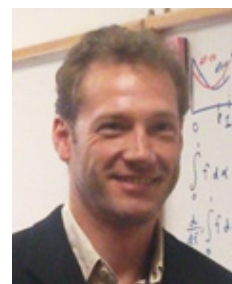
Australian National University

SUMMARY

Dr Henckel is a Lecturer at the Research School of Economics, ANU, and a Research Associate at the Centre for Applied Macroeconomic Analysis (CAMA). He directs the “Behavioural Macroeconomics and Complexity” research program at CAMA and serves as chair of CAMA’s Shadow RBA Board. He holds a Ph.D. from the London School of Economics where he has also taught.

Dr Henckel has extensive experience researching on and advising developing countries on economic policy. He has in the past worked at the International Monetary Fund in Washington, at the Institute of Development Studies in Guyana, South America, and been involved in numerous workshops, conferences and research programs throughout the Asian region.

Dr Henckel has more than 15 years of teaching experience at all levels of studies as well as convened and taught numerous executive training courses for Australian government departments.



KEY WORDS (POLICY AREAS AND METHODOLOGY EXPERTISE)

- Behavioural Economics
- International Economics
- International Finance
- Macroeconomics
- Monetary Economics

ADDITIONAL INFORMATION

Timo.Henckel@anu.edu.au

[More information](#)

ROBERT HOFFMANN

PROFESSOR OF ECONOMICS

RMIT University

SUMMARY

Robert Hoffmann is a Professor of Economics at RMIT University. His current research areas are in behavioural business economics. Most of his work deals with decision making in social and strategic situations.

He is particularly interested how culture, religion and other social identities affect how people interact. Previous research findings include influence and persuasion in virtual worlds and cyberspace, design and use of financial information (stock market and superannuation), and the role of religion in public life.



KEY WORDS (POLICY AREAS AND METHODOLOGY EXPERTISE)

- Culture and Social Identity
- Economics of Culture
- Online Environments
- Religion

ADDITIONAL INFORMATION

robert.hoffmann@rmit.edu.au

[More information](#)

DR MELISSA HYDE

SENIOR RESEARCH FELLOW, HEALTH SCIENCES

Griffith University

SUMMARY

Dr Hyde works on several strands of research which promote healthy life choices that enhance wellbeing. In particular, she has focussed on understanding people's decisions to consent to organ or tissue donation, especially encouraging family to communicate their organ donation wishes.

She also has an interest in altruistic/helping behaviour (e.g., volunteering, charitable giving) and the community and social impact of cancer.



KEY WORDS (POLICY AREAS AND METHODOLOGY EXPERTISE)

- Community Engagement
- Organ Donation
- Psycho-Oncology
- Volunteerism

ADDITIONAL INFORMATION

melissa.hyde@griffith.edu.au

[More information](#)

DR BRADLEY JORGENSEN

SENIOR RESEARCH FELLOW, BEHAVIOURWORKS

Monash University

SUMMARY

Dr Jorgensen's research interests are in economic and applied social psychology.

He has conducted research in the following areas: community-based approaches to stormwater pollution abatement, the spatial distribution of recreational boating, the management of coarse woody habitat in recreational lakes, interventions to reduce industrial pollution, trust and acceptance of urban drinking water systems, 'sense of place' theory and measurement, water supply strategies in semi-arid regions, improving the use of research in policy, increasing compliance with standard letter requests, behaviour change interventions for biosecurity, evaluating interventions for energy conservation, and the non-market valuation of ecosystem services and public goods.



KEY WORDS (POLICY AREAS AND METHODOLOGY EXPERTISE)

- Contingent Valuation
- Energy Conservation
- Environmental Behaviour
- Sense of Place
- Water Conservation

ADDITIONAL INFORMATION

bradley.jorgensen@monash.edu

[More information](#)

DR KENAN KALAYCI

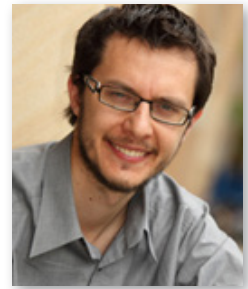
SENIOR LECTURER, SCHOOL OF ECONOMICS

University of Queensland

SUMMARY

Dr Kenan Kalayci is a Senior Lecturer at the School of Economics, The University of Queensland and an ARC Discovery Early Career Research Fellow. His areas of research include Industrial Organization, Behavioural Economics and Experimental Economics. He has expertise in consumer and competition policy, multi-sided platform markets and randomised controlled trials.

Dr Kalayci obtained his PhD in Economics from Tilburg University in 2011. Since then, Dr Kalayci has been published in numerous journals including the Experimental Economics, Journal of Economic Behaviour and Organization and International Journal of Industrial Organization. He has been a recipient of numerous grants, awards and scholarships.



KEY WORDS (POLICY AREAS AND METHODOLOGY EXPERTISE)

- Behavioural Economics
- Experimental Economics
- Industrial Organisation

ADDITIONAL INFORMATION

k.kalayci@uq.edu.au

[More information](#)

YOSHIHISA KASHIMA

PROFESSOR, MELBOURNE SCHOOL OF PSYCHOLOGICAL SCIENCES

University of Melbourne

SUMMARY

Professor Kashima is a Professor of Psychology, and a member of the Policy Lab at the University of Melbourne. His research focuses on cultural dynamics – the formation, maintenance, and transformation of culture over time via cognitive and communicative processes by which ideas and practices diffuse through social networks. He has been applying the theoretical approach to stereotypes and intergroup relationship, health communication, and most recently sustainability.

Professor Kashima is a Fellow of the Academy of the Social Sciences in Australia, Association for Psychological Science, and Society for Experimental Social Psychology, and served as the President of the International Association for Cross-Cultural Psychology.



KEY WORDS (POLICY AREAS AND METHODOLOGY EXPERTISE)

- Cultural Dynamics
- Interpersonal Communication
- Social Networks
- Social Psychology
- Sustainability

ADDITIONAL INFORMATION

ykashima@unimelb.edu.au

[More information](#)

PAUL KOFMAN

PROFESSOR, DEAN, FACULTY OF BUSINESS AND ECONOMICS

University of Melbourne

SUMMARY

Professor Kofman main research interests are in behavioural and quantitative finance, and the regulation of financial markets. He has worked with both private and public sector organisations.



KEY WORDS (POLICY AREAS AND METHODOLOGY EXPERTISE)

- Behavioural Finance
- Ethics of Finance
- International Trade
- Regulation of Financial Markets
- Quantitative Finance

ADDITIONAL INFORMATION

pkofman@unimelb.edu.au

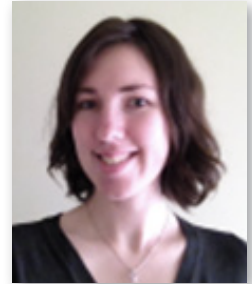
[More information](#)

Deakin University

SUMMARY

Dr Emily Kothé is a Lecturer in Psychology at Deakin University. Her primary research interest is the mechanisms underlying successful behaviour change in food consumption and diet. Other research interests include the development and evaluation of theory based health interventions in the domains of fruit and vegetable consumption, breakfast consumption and other appetitive behaviours.

Her previous research has found that successful interventions on changing breakfast consumption include a psychosocial component to increase positive attitudes towards nutrition, and interventions to increase breakfast consumption which would be expected to work, like positive and negative framing, and Perceived Behavioural Control, may not be effective.



KEY WORDS (POLICY AREAS AND METHODOLOGY EXPERTISE)

- Health
- Nursing
- Nutrition
- Psychology

ADDITIONAL INFORMATION

emily.kothe@deakin.edu.au

[More information](#)

DR ELIZABETH KYONKA

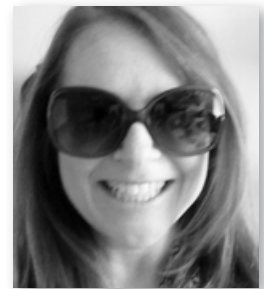
SCHOOL OF BEHAVIOURAL, COGNITIVE AND SOCIAL SCIENCES

University of New England

SUMMARY

Dr Kyonka's work in the experimental analysis of behaviour can address questions about productivity and education such as:

- What is the best way organize meetings to maximize employee engagement?
- How often should workers take breaks and how long should they be to safely sustain a high rate of output?
- How do we all make sure we're working smarter, not harder?
- How long can we expect students to sustain attention in class before they need a break?
- What can educators do to increase attendance in rural areas?



KEY WORDS (POLICY AREAS AND METHODOLOGY EXPERTISE)

- Behavioural Economics
- Education
- Experimental Psychology
- Productivity

ADDITIONAL INFORMATION

ekyonka@une.edu.au

[More information](#)

DR JO LABAN PERYMAN

LECTURER, ECONOMICS

RMIT University

SUMMARY

Dr Jo Laban Peryman is a Lecturer in Economics at RMIT University. Using mainly experimental methods, her research focuses on how social norms and identity shape economic behaviour. In particular, she is interested in how biases in decision making depend on social or cultural factors. This research helps policymakers understand the context in which policies may work or fail, or even have unintended consequences.

Her previous research has found that policies designed to encourage behaviour using social norms may have the opposite effect in individualistic cultures, and that fines may encourage subsequent risk seeking behaviour (e.g. tax evasion)



KEY WORDS (POLICY AREAS AND METHODOLOGY EXPERTISE)

- Biases
- Decision Making
- Prospect Theory
- Social Norms
- Student Loans
- Tax

ADDITIONAL INFORMATION

jo.peryman@rmit.edu.au

[More information](#)

ANDREAS LEIBBRANDT

DEPARTMENT OF ECONOMICS

Monash University

SUMMARY

Andreas is an experimental economist who is interested in addressing issues in all areas of public policy, in particular related to gender, cooperation, and compliance.

He is the founding director of MERIT – the Monash Experimental Research Insights Team, an initiative between Monash University and the University of Chicago, that collaborates with governments to experimentally test policy options. Andreas and MERIT have extensive experience in designing and implementing trials (both in the lab and out in the field) and are available as consultants.



KEY WORDS (POLICY AREAS AND METHODOLOGY EXPERTISE)

- Competitiveness
- Compliance
- Cooperation
- Gender
- Pricing
- Worker Motivation

ADDITIONAL INFORMATION

andreas.leibbrandt@monash.edu

[More information](#)

[MERIT](#)

WINNIFRED LOUIS

ASSOCIATE PROFESSOR SCHOOL OF PSYCHOLOGY

University of Queensland

SUMMARY

Professor Louis has worked in the School of Psychology at UQ since 2005.

She has received faculty, university, national and international awards for teaching, mentoring, and research excellence. She is happy to collaborate on projects related to social influence, identity and decision-making; effective persuasion in conflict; and social norms.



KEY WORDS (POLICY AREAS AND METHODOLOGY EXPERTISE)

- Collective Action
- Psychology
- Social Norms

ADDITIONAL INFORMATION

wlouis@psy.uq.edu.au

[More information](#)

DAN LOVALLO

PROFESSOR, THE UNIVERSITY OF SYDNEY BUSINESS SCHOOL

University of Sydney

SUMMARY

Dan Lovallo is a Professor of Business Strategy at the University of Sydney and a senior research fellow at the Institute for Business Innovation at the University of California, Berkeley.

His research is concerned with psychological aspects of strategic decisions and has appeared in the American Economic Review, Management Science and the Harvard Business Review. He received his PhD from the Haas School of Business at the University of California, Berkeley.

He is a member of the Editorial Board for the Strategic Management Journal and the McKinsey Finance.



KEY WORDS (POLICY AREAS AND METHODOLOGY EXPERTISE)

- Strategic Decision Making

ADDITIONAL INFORMATION

dan.lovallo@sydney.edu.au

[More information](#)

DR GUY MAYRAZ

ASSISTANT PROFESSOR AND LECTURER, DEPARTMENT OF ECONOMICS

University of Melbourne

SUMMARY

Guy Mayraz joined University of Melbourne as Lecturer in January 2013. His research is in behavioural economics, including theory, experiments, and empirical micro research. Some of Guy's research is on the border between behavioural economics and decision theory.

One particular focus of Guy's research is biases in beliefs, and in particular optimism (or wishful thinking) and pessimism. Another is subjective well-being. Guy holds a PhD in economics from the London School of Economics, and a B.Sc. in Math from the Hebrew University in Jerusalem.



KEY WORDS (POLICY AREAS AND METHODOLOGY EXPERTISE)

- Choice Under Uncertainty
- Happiness
- Over-Confidence
- Wishful-Thinking

ADDITIONAL INFORMATION

g.mayraz@unimelb.edu.au

[More information](#)

IAN MCDONALD

EMERITUS PROFESSOR, DEPARTMENT OF ECONOMICS, DEPARTMENT OF ECONOMICS

University of Melbourne

SUMMARY

Professor Ian McDonald graduated with a PhD from Simon Fraser University in 1974. His fields of study are Behavioural Economics, the Economics of Ageing and Macroeconomics.

Professor McDonald has held visiting positions at the Massachusetts Institute of Technology, Monash University, Nanyang University, Oxford University and Queen's University. Ian has held various administrative positions including Head of the Department of Economics, University of Melbourne, Chair of the Teaching and Learning Quality Assurance Committee, University of Melbourne, and Deputy Dean, Faculty of Economics and Commerce, University of Melbourne.

Ian is an Editor of the Australian Economic Review and a Fellow of the Academy of Social Sciences.



KEY WORDS (POLICY AREAS AND METHODOLOGY EXPERTISE)

- Behavioural Economics
- Economics of Ageing

ADDITIONAL INFORMATION

i.mcdonald@unimelb.edu.au

CRAIG MCGARTY

PROFESSOR, HEAD OF PSYCHOLOGY

Western Sydney University

SUMMARY

Prof McGarty is currently the Head of the Psychology Discipline in the School of Social Sciences and Psychology at Western Sydney University. Prof McGarty is a social and political psychologist whose main work is on intergroup relations especially social identity, collective action, group-based emotions and stereotype formation.



KEY WORDS (POLICY AREAS AND METHODOLOGY EXPERTISE)

- Collective Action, groups
- Intergroup Relations
- Political Psychology
- Social Identity
- Social Psychology

ADDITIONAL INFORMATION

C.Mcgarty@westernsydney.edu.au

[More information](#)

DR GEORGE MESSINIS

SENIOR RESEARCH FELLOW, VICTORIA INSTITUTE OF STRATEGIC ECONOMIC STUDIES

Western Sydney University

SUMMARY

Dr Messinis is Senior Research Fellow at the Victoria Institute of Strategic Economic Studies (VISES). He has published in a range of topics including consumer behaviour, education, labour economics, innovation, migration, and economic development.

Dr Messinis has led research teams that have made significant contributions to Victoria University and its engagement with industry and the research community. Since 2005, he has managed the SEEK Employment Indicators project in a partnership with SEEK Pty Ltd. The project has delivered monthly reports on internet job advertisement and applications posted with SEEK. These indicators have been established as leading indicators of labour market trends in regional Australia and New Zealand.



KEY WORDS (POLICY AREAS AND METHODOLOGY EXPERTISE)

- Education, Skills and Productivity
- Large Databases
- Panel Data
- State-of-the-Art Applied Econometrics of Survey
- Statistical Software
- Time-Series

ADDITIONAL INFORMATION

george.messinis@vu.edu.au

[More information](#)

DR CARSTEN MURAWSKI

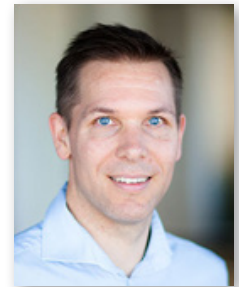
PRINCIPAL INVESTIGATOR, BRAIN, MIND AND MARKETS LABORATORY,
DEPARTMENT OF FINANCE

University of Melbourne

SUMMARY

Carsten Murawski is an economist and a principal investigator in the Brain, Mind and Markets Laboratory in the Department of Finance at The University of Melbourne. His primary area of research is individual decision-making, in particular its neurobiological basis, including intertemporal choice, learning and problem solving.

Carsten was a postdoctoral fellow at the University of Zurich and a visiting researcher at New York University and at Columbia University. He has taught at The University of Melbourne, the University of Zurich and the Swiss Federal Institute of Technology. He holds a PhD from the University of Zurich, and a Master's degree from the University of Bayreuth.



KEY WORDS (POLICY AREAS AND METHODOLOGY EXPERTISE)

- Consumer Finance
- Decision Neuroscience
- Experimental Finance
- Financial Decision-Making
- Financial Well-Being

ADDITIONAL INFORMATION

carstenm@unimelb.edu.au

[More information](#)

DR ANANTA NEELIM

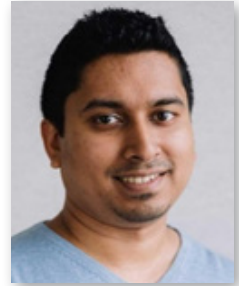
LECTURER, SCHOOL OF ECONOMICS FINANCE AND MARKETING

RMIT University

SUMMARY

Dr Ananta Zakaria Neelim is a Lecturer in Economics at RMIT University. His primary research interest is in the behavioural aspects of development. He uses behavioural economics to understand issues related to social identity, redistribution, social norms in developing countries.

In addition he studies how image concerns and punishment affect behaviour of individuals. His previous research has found that including framing techniques can be used to nudge rich people to redistribute wealth in developing countries, and that religious minorities behave distinctly from religious majorities in trust behaviour.



KEY WORDS (POLICY AREAS AND METHODOLOGY EXPERTISE)

- Charitable Giving
- Discrimination
- Evaluation
- Punishment
- Social Identity
- Social Norms

ADDITIONAL INFORMATION

ananta.neelim@rmit.edu.au

[More information](#)

DAVID NEUMANN

DEPUTY HEAD, LEARNING AND TEACHING SCHOOL OF APPLIED PSYCHOLOGY

Griffith University

SUMMARY

Prof Neumann is a trained psycho-physiologist and will use a combination of behavioural, self-report and physiological measures in his research.

He has research expertise in exercise and sport psychology, particularly in regards to the application of attentional focus strategies to enhance performance and enjoyment.

He also conducts research on emotion and empathy in sporting or clinical contexts (e.g., schizophrenia) and has an interest in higher education research, particularly in enhancing the teaching of statistics.



KEY WORDS (POLICY AREAS AND METHODOLOGY EXPERTISE)

- Health
- Psychology
- Sport

ADDITIONAL INFORMATION

d.neumann@griffith.edu.au

[More information](#)

BEN NEWELL

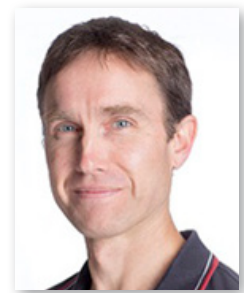
PROFESSOR OF COGNITIVE PSYCHOLOGY, SCHOOL OF PSYCHOLOGY

University of New South Wales

SUMMARY

Ben Newell's research focusses on the cognitive processes underlying judgment, choice and decision making and the application of this knowledge to environmental, medical, financial and forensic contexts.

His findings indicate that unconscious deliberation (i.e. 'sleeping on it') is no more effective than conscious deliberation for making complex decisions, and that four classes of psychological phenomena provide insights for climate scientists wishing to disseminate findings.



KEY WORDS (POLICY AREAS AND METHODOLOGY EXPERTISE)

- Cognitive Psychology
- Decision Making
- Risk and Uncertainty

ADDITIONAL INFORMATION

ben.newell@unsw.edu.au

[More information](#)

DR JOSH NEWTON

SENIOR LECTURER IN MARKETING

Deakin University

SUMMARY

Josh Newton completed his PhD (Psychology) at Monash University in 2011 and is now employed as a Senior Lecturer in the Department of Marketing at Deakin University.

His research interests include social marketing, particularly in the areas of health and sustainability, and consumer behaviour.

Josh has conducted research across a range of social marketing contexts, including physical activity, nutrition, organ donation, sport injury prevention, sexual health, international health, illegal dumping of rubbish, and climate change.



KEY WORDS (POLICY AREAS AND METHODOLOGY EXPERTISE)

- Environment
- Health
- Lab Experiments
- Surveys

ADDITIONAL INFORMATION

j.newton@deakin.edu.au

[More information](#)

ANDREAS ORTMANN

PROFESSOR, EXPERIMENTAL AND BEHAVIOURAL ECONOMICS
IN THE SCHOOL OF ECONOMICS

University of NSW

SUMMARY

Andreas took up his current position of Professor of Experimental and Behavioural Economics in the School of Economics, UNSW Australia Business School in 2009.

His work has been published in journals such as Management Science, Energy Economics, Journal of Economic Behaviour and Organization, Behavioural and Brain Sciences, Journal of Economic Theory, International Journal of Game Theory, Experimental Economics, Psychological Methods, European Economic Review and many others. His work has been widely cited.



KEY WORDS (POLICY AREAS AND METHODOLOGY EXPERTISE)

- Behavioural Economics
- Charities and not-for Profits
- Corporate Finance
- Emissions Trading Schemes
- Experimental Economics
- Experimental Methods in the Social Sciences
- Game Theory
- Superannuation

ADDITIONAL INFORMATION

a.ortmann@unsw.edu.au

[More information](#)

LIONEL PAGE

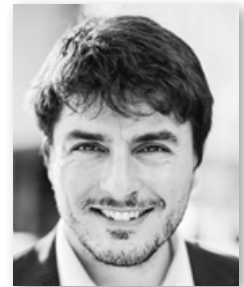
PROFESSOR, QUT BUSINESS SCHOOL, ECONOMICS AND FINANCE

Queensland University of Technology

SUMMARY

Dr Page's work takes a behavioural economics approach to educational choices of students in Australia and the UK. He also researches wider behavioural topics on goals and performance. In one relevant study, Dr Page ran a lab experiment to test for explanations of social inequalities in education, and found social differences in education were a result of differing aspiration levels, which led to different educational choices.

He also organised a large study showing that the sequence which options are presented shapes the outcome of choice, by analysing the TV show 'Idol'.



KEY WORDS (POLICY AREAS AND METHODOLOGY EXPERTISE)

- Behaviour in Contests
- Educational Choices
- Game Theory
- Political Choices
- Risk Attitudes
- Social Preferences
- Superannuation

ADDITIONAL INFORMATION

lionel.page@qut.edu.au

[More information](#)

MAURICIO PALMEIRA

ASSOCIATE PROFESSOR, GRADUATE SCHOOL OF BUSINESS

Sungkyunkwan University, South Korea

SUMMARY

Mauricio's research focus is on consumer behaviour and he published in some of the leading journal in business and psychology, including Journal of Consumer Research, Organizational Behaviour and Human Decision Processes, Journal of Experimental Social Psychology, Journal of Retailing and Journal of Behavioural Decision Making.

Topics of published and current projects include price promotions, advice-taking, brand extensions, word-of-mouth and social perceptions.



KEY WORDS (POLICY AREAS AND METHODOLOGY EXPERTISE)

- Brand Extensions
- Consumer Behaviour
- Heuristics
- Loyalty Programs
- Social Perceptions

ADDITIONAL INFORMATION

mpalmeira@skku.edu

[More information](#)

ABIGAIL PAYNE

DIRECTOR AND RONALD HENDERSON PROFESSOR,
MELBOURNE INSTITUTE OF APPLIED ECONOMIC AND SOCIAL RESEARCH

University of Melbourne

SUMMARY

Professor Payne is the Director of the leading Australian institute on applied economic and social research. The Institute has a team of more than 50 academic researchers that are engaged in research on various microeconomic and macroeconomic topics.

Professor Payne's own work focuses on empirical public economics issues. Her research encompasses questions around student performance and understanding donor and charity behaviour. Her current research includes projects to understand the motivations of donors, the role of fundraising in private giving, charity operations and their effects on communities.

Professor Payne's current research in education includes understanding the decision to attend post-secondary education, understanding gender gaps in educational performance, and determinants of successful transitions from high school to university.



KEY WORDS (POLICY AREAS AND METHODOLOGY EXPERTISE)

- Economics of Charities
- Economics of Education
- Law and Economics
- Public Economics

ADDITIONAL INFORMATION

abigail.payne@unimelb.edu.au

[More information](#)

DR NAOMI PRIEST

FELLOW, ANU CENTRE FOR SOCIAL RESEARCH AND METHODS

Australian National University

SUMMARY

Dr Priest's broad research interest is to integrate social and epidemiologic methods to examine and address inequalities in health and development across populations and place.

This includes social epidemiology using large-scale population and linked datasets, and qualitative research, to understand differences in health and development experienced by youths from Indigenous backgrounds and from ethnic minorities, and explore explanations for observed differences across intersecting identities and experiences such as gender, socioeconomic position, and disability.

Another area of her research is focused on initiatives to counter stigma, discrimination and bias and promote diversity and inclusion among individuals, organisations and across society.



KEY WORDS (POLICY AREAS AND METHODOLOGY EXPERTISE)

- Children
- Gender
- Health
- Indigenous
- Qualitative
- Quantitative

ADDITIONAL INFORMATION

Naomi.Priest@anu.edu.au

[More information](#)

DR ANDREW REESON

PRINCIPAL RESEARCH SCIENTIST, DATA61

CSIRO

SUMMARY

Andrew is an applied economist who combines behavioural economics with econometric modelling to address issues of national significance.

An early adopter of behavioural economics in 2004, he has applied it to inform environmental policy (including market-based instruments, water markets, Emissions Reduction Fund auction design), tax (e.g. the Henry Tax Review) and superannuation (e.g. understanding drawdown behaviour, enhancing member engagement).

His work includes laboratory experiments, surveys, analysis of large administrative datasets and large-scale randomised controlled trials.



KEY WORDS (POLICY AREAS AND METHODOLOGY EXPERTISE)

- Digital Economy
- Environment
- Market Design
- Superannuation
- Tax

ADDITIONAL INFORMATION

Andrew.Reeson@data61.csiro.au

[More information](#)

SHARYN RUNDLE-THIELE

DIRECTOR, SOCIAL MARKETING @ GRIFFITH

Griffith University

SUMMARY

Professor Sharyn Rundle-Thiele is Director, Social Marketing @ Griffith and Editor-in-Chief, Journal of Social Marketing.

Drawing on her commercial marketing background Sharyn's research focuses on applying marketing tools and techniques to change behaviour for the better. She is currently working on projects delivering changes to the environment, people's health and for the greater social good.

Selected current projects include changing adolescent attitudes towards drinking alcohol, increasing healthy eating and physical activity to combat obesity, changing farming practice to improve water quality and delivering reductions in assaults.



KEY WORDS (POLICY AREAS AND METHODOLOGY EXPERTISE)

- Alcohol
- Environment
- Healthy Eating
- Obesity
- Physical Activity
- Social Marketing

ADDITIONAL INFORMATION

s.rundle-thiele@griffith.edu.au

[More information](#)

REBEKAH RUSSELL-BENNETT

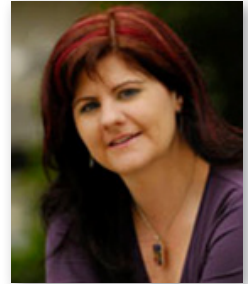
PROFESSOR, QUT BUSINESS SCHOOL

Queensland University of Technology

SUMMARY

Rebekah holds a PhD in brand loyalty for the services sector, is the co-editor for the Journal of Services Marketing and has published over 155 peer-reviewed articles with more than 40 articles in international journals.

Rebekah research is in the field of Social Marketing (using commercial marketing to address social problems such as alcohol consumption, chronic disease, water usage, electricity use, public transport and diet), and she is responsible for the development of the award-winning QUTopia role-play simulation at QUT.



KEY WORDS (POLICY AREAS AND METHODOLOGY EXPERTISE)

- Behavioural Change
- Consumer Behaviour
- Customer Loyalty
- Health Services
- Social Marketing

ADDITIONAL INFORMATION

rebekah.bennett@qut.edu.au

[More information](#)

DR DAVID SAVAGE

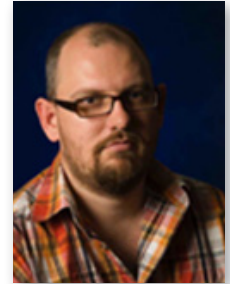
LECTURER, UNIVERSITY OF NEWCASTLE AND VISITING FELLOW

Queensland University of Technology

SUMMARY

David is a behavioral economics researcher, with primary research interest in the behavioral analysis of disasters and extreme environments. This includes man-made and natural disasters (from floods to terrorism) and high stress work or play environments (from elite athletes to police officers).

David strives to marry the behavioral work of the social sciences to the empirical rigor of economics, and generating new and important insights into the disaster and behavioral literatures, covering the empirical analysis of decision making, emotions, health and stress in these non-normal environments.



KEY WORDS (POLICY AREAS AND METHODOLOGY EXPERTISE)

- Behavioural Economics
- Decision Making
- Extreme Economics
- Life and Death Economics
- Microeconomics

ADDITIONAL INFORMATION

David.Savage@newcastle.edu.au

[More information](#)

DR MARKUS SCHAFFNER

QUT BUSINESS SCHOOL, ECONOMICS AND FINANCE

Queensland University of Technology

SUMMARY

Dr Schaffner researches issues around tax compliance and tax morale – trying to understand the factors which underlie why people pay tax in the first place. His work uses an experimental economics methodology to explore these issues, but also uses psychological and physiological factors to support his research.



KEY WORDS (POLICY AREAS AND METHODOLOGY EXPERTISE)

- Tax Compliance

ADDITIONAL INFORMATION

m.schaffner@qut.edu.au

[More information](#)

DR RITA SEETHALER

DIRECTOR, THE URBAN TRANSPORT INSTITUTE
DIRECTOR, GREEN AND GOLD TREE FARMS

Queensland University of Technology

SUMMARY

Dr Rita Seethaler is the Director of the The Urban Transport Institute. She has many years experience in transport planning, having worked in government in Switzerland for the Federal Statistics Office and the Bureau of Transport Studies. Before coming to Australia, she took a lead role in a trilateral project between France, Austria and Switzerland on the health effects of air pollution from road traffic.

Since coming to Australia, Rita has continued her investigations into the environmental impacts of transport and done research into the application of the Principles of Persuasion to encourage sustainable transport behaviour.



KEY WORDS (POLICY AREAS AND METHODOLOGY EXPERTISE)

- Field Experiments
- Surveys
- Sustainable Travel

ADDITIONAL INFORMATION

rita.seethaler@tuti.com.au

[More information](#)

DR HUGH SIBLY

TASMANIAN SCHOOL OF ECONOMICS AND BUSINESS

University of Tasmania

SUMMARY

Dr Hugh Sibly's research interest is in price determination, particularly in the areas of experimental/behavioural economics, urban water markets, macroeconomics and industrial organisation.

His research on urban water pricing investigates how to most efficiently allocate available urban water over the climate cycle. His work in the areas of behavioural and experimental economics looks at how social comparisons and cooperative preferences shape economic interactions.



KEY WORDS (POLICY AREAS AND METHODOLOGY EXPERTISE)

- Lab Experiments
- Industrial Organisation
- Urban Water Markets

ADDITIONAL INFORMATION

Hugh.sibly@utas.edu.au

[More information](#)

MATHIAS SINNING

ASSOCIATE PROFESSOR, CRAWFORD SCHOOL OF PUBLIC POLICY

Australian National University

SUMMARY

Mathias is interested in the application of econometric methods to issues related to labour economics and public economics.

He is currently working on a project that aims to improve the Australian tax system by designing and evaluating new approaches to tax payment through applying behavioural insights in empirical trials in collaboration with the Australian Taxation Office.



KEY WORDS (POLICY AREAS AND METHODOLOGY EXPERTISE)

- Applied Econometrics
- Higher Education
- Inequality
- Labour Economics
- Public Economics
- Public Policy Evaluation

ADDITIONAL INFORMATION

mathias.sinning@anu.edu.au

[More information](#)

ROBERT SLONIM

PROFESSOR, SCHOOL OF ECONOMICS

University of Sydney

SUMMARY

Professor Slonim is Professor of Economics at the University of Sydney. He holds a PhD from Duke University and MBA and BA degrees from the University of California Berkeley.

Professor Slonim is best recognized as a pioneer in the area of experimental economics and has written extensively on learning, trust and the economics of charitable behaviour and blood donations.

Professor Slonim is innovative in his use of experimental methods that have theoretical importance and also represent important findings for matters of public policy.



KEY WORDS (POLICY AREAS AND METHODOLOGY EXPERTISE)

- Blood Donor Motivation
- Charitable Behaviour
- Economics of Education
- Experimental Economics
- Learning
- Trust

ADDITIONAL INFORMATION

robert.slonim@sydney.edu.au

[More information](#)

LIAM SMITH

ASSOCIATE PROFESSOR, DIRECTOR, BEHAVIOURWORKS

Monash University

SUMMARY

Associate Professor Liam Smith is the Director of BehaviourWorks Australia (BWA) at Monash University.

Since establishing BWA in 2011, the research unit has grown to 18 staff who work in partnership with government and the private sector to design, deliver and evaluate research-informed behaviour change programs to address a raft of social issues including health, workplace safety, biosecurity, education, family violence, social inclusion, digital inclusion, retirement savings and environment.

He has published widely on behaviour and behaviour change including, in 2016, in the Journal of Environmental Psychology, Environmental Science and Policy and Science Communication.



KEY WORDS (POLICY AREAS AND METHODOLOGY EXPERTISE)

- Applied Behavioural Methods
- Behavioural Spillover
- Conservation
- Energy
- Emotion and Behaviour
- Water

ADDITIONAL INFORMATION

Liam.smith@monash.edu.au

[More information](#)

SUSAN THORP

PROFESSOR, THE UNIVERSITY OF SYDNEY BUSINESS SCHOOL

University of Sydney

SUMMARY

Susan Thorp researches financial decision making over the life cycle. She works in cross-disciplinary teams, often using experimental and survey methods.

Professor Thorp has published over forty academic papers in leading finance journals including Management Science, the Economic Journal and the Review of Finance. She is also a regular contributor to pension policy discussions and is a member of the OECD/INFE Research Committee.

Before joining the University of Sydney, she held positions as Professor of Finance and Superannuation at the University of Technology Sydney, and the Reserve Bank of Australia.



KEY WORDS (POLICY AREAS AND METHODOLOGY EXPERTISE)

- Behavioural Finance
- Consumer Financial Decision Making
- Financial Econometrics
- Superannuation and Pensions

ADDITIONAL INFORMATION

susan.thorp@sydney.edu.au

[More information](#)

DR BARRY TOLCHARD

SENIOR LECTURER, SCHOOL OF HEALTH

University of New England

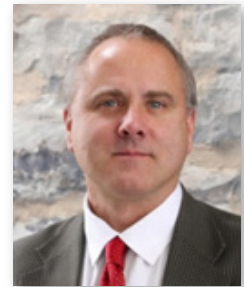
SUMMARY

Barry is a Registered Nurse, specialising in Mental Health. Barry has worked in the UK and South Australia and works as a consultant nurse psychotherapist.

In nursing, Barry teaches mental health, learning disability, chronic disease management and more widely teaches clinical psychology, psychiatry and other allied health at undergraduate and postgraduate levels.

Barry is an active researcher with interests in gambling/addictions, mental health, Cognitive-Behaviour Therapy, public health, chronic disease and health education. Barry's research interests span clinical, epidemiological and experimental approaches at both qualitative and quantitative levels.

His current research studies the processes that produce gambling stigma at an individual (self-stigma), communal (public-stigma) and social (structural-stigma) level.



KEY WORDS (POLICY AREAS AND METHODOLOGY EXPERTISE)

- Addictions
- Chronic Disease Management
- Gambling
- Learning Disability
- Mental Health
- Research Productivity

ADDITIONAL INFORMATION

btolchar@une.edu.au

[More information](#)

BENNO TORGLER

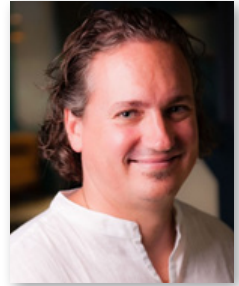
PROFESSOR, QUT BUSINESS SCHOOL

Queensland University of Technology

SUMMARY

Professor Benno Torgler has worked on understanding the norms underlying pro-social behaviours of littering and tax compliance.

His more recent work has studied behaviour in life-or-death situations, including drawing on historical work from the sinking of the Titanic. This stream of work could have policy implications to designing responses to natural disasters. In this research, he finds that social norms, such as 'women and children first', are still present even in these extreme situations.



KEY WORDS (POLICY AREAS AND METHODOLOGY EXPERTISE)

- Econometrics
- Environment
- Surveys
- Tax

ADDITIONAL INFORMATION

Benno.torgler@qut.edu.au

[More information](#)

DR AGNIESZKA TYMULA

SENIOR LECTURER, SCHOOL OF ECONOMICS

University of Sydney

SUMMARY

Agnieszka Tymula is a decision-scientist who uses experimental and traditional theoretical economic tools in her research.

While studying behavioural/experimental economics and choice theory as a graduate student at Bocconi University and a visiting scholar at Northwestern University, Agnieszka became convinced that understanding the biological constraints of human decision-making will be an effective way to constrain economic theory and experiments. In order to further explore this, Agnieszka joined the Society for Neuroeconomics and became a post-doctoral researcher in Prof Paul Glimcher's lab at the Center for Neuroeconomics at New York University.

She joined the University of Sydney in July 2013.



KEY WORDS (POLICY AREAS AND METHODOLOGY EXPERTISE)

- Behavioural Economics
- Experimental Economics
- Neuroeconomics

ADDITIONAL INFORMATION

agnieszka.tymula@sydney.edu.au

[More information](#)

DR EVA VIVALT

LECTURER, RESEARCH SCHOOL OF ECONOMICS

Australian National University

SUMMARY

Eva has extensive experience with international development, including field experience, through work with the UN Development Program, Oxford Development Abroad, and numerous other charity groups.

Much of her research focuses on how governments, non-profit agencies, and other large institutions use evidence from research, and how impact evaluations can be used to design better policies.



KEY WORDS (POLICY AREAS AND METHODOLOGY EXPERTISE)

- Impact Evaluations
- International Development
- Public Policy

ADDITIONAL INFORMATION

eva.vivalt@anu.edu.au

[More information](#)

MELANIE WAKEFIELD

ADJUNCT PROFESSOR, SCHOOL OF PUBLIC HEALTH

University of Sydney

SUMMARY

Professor Melanie Wakefield is Director of our Centre for Behavioural Research in Cancer (CBRC). She is also a Principal Research Fellow of the Australian National Health and Medical Research Council, with honorary professorial appointments at three Australian universities.

She has training in psychology and public health. Her centre conducts applied behavioural research to guide the development and evaluation of population-focused cancer prevention programs, including mass media campaigns in tobacco control, skin cancer prevention, obesity prevention and to promote cancer screening.

Her research centre is closely integrated with Cancer Council Victoria programs that develop and deliver mass media campaigns, including the well-known Australian Quit and SunSmart campaigns, and it provides advice and input into cancer prevention policies and media campaigns to governments at state, national and international levels.



KEY WORDS (POLICY AREAS AND METHODOLOGY EXPERTISE)

- Behavioural Sciences
- Cancer
- Communication
- Health Psychology
- Tobacco and Tobacco Control

ADDITIONAL INFORMATION

melanie.wakefield@sydney.edu.au

[More information](#)

LI MING WEN

CLINICAL ASSOCIATE PROFESSOR SCHOOL OF PUBLIC HEALTH

University of Sydney

SUMMARY

A/Prof Li Ming Wen, MD, MMed, PhD, has extensive research experience in the fields of medicine, social science and public health with over 100 peer-reviewed publications in high impact journals including BMJ and JAMA Paediatrics.

He holds a position as Adjunct Professor in both the School of Public Health, Fudan University, and the Faculty of Medicine, Tongji University, China. He is also a Research and Evaluation Manager at Health Promotion Service, Sydney Local Health District.

His current research interests are in childhood obesity, physical activity, active transport, sexual health and tobacco control with specific expertise in the evaluation of health promotion initiatives.



KEY WORDS (POLICY AREAS AND METHODOLOGY EXPERTISE)

- Cardiovascular Disease
- Diabetes
- Evidence-Based Medicine
- Healthy Ageing
- Lifespan
- Obesity

ADDITIONAL INFORMATION

liming.wen@sydney.edu.au

[More information](#)

MICHAEL WENZEL

ASSOCIATE PROFESSOR, SCHOOL OF PSYCHOLOGY

Flinders University

SUMMARY

Dr Wenzel's main research interests in social psychology relate to issues of justice and fairness, intergroup relations, and compliance with laws and regulations.

In the area of justice, his focus has recently been on justice motives after transgressions and victimization, and the role that punishment, revenge, apologies and forgiveness play in the restoration of a sense of justice.

In the area of compliance, he is interested in the role of fairness perceptions, social identity, attributions of legitimacy to regulators and law enforcement agencies, and the interaction between norms and law.

His research may have applications for how courts and legal systems treat the perpetrators and victims of crime.



KEY WORDS (POLICY AREAS AND METHODOLOGY EXPERTISE)

- Compliance
- Crime
- Forgiveness

ADDITIONAL INFORMATION

michael.wenzel@flinders.edu.au

[More information](#)

DR OLAF WERDER

LECTURER, DEPARTMENT OF MEDIA AND COMMUNICATIONS

University of Sydney

SUMMARY

A graduate in marketing/management from the Universität Dortmund, Germany, in advertising from the University of Illinois, and in Mass Communication from the University of Florida, Olaf Werder holds a lectureship in strategic and health communication at the Media and Communications Department of the University of Sydney after having held positions at the University of Florida and the University of New Mexico.



Prior to his academic appointment, he has worked in the communication industry on the media and agency side in two countries for about ten years.

KEY WORDS (POLICY AREAS AND METHODOLOGY EXPERTISE)

- Community-Based Participatory Research
- Health Communication
- Health Policy
- Health Promotion
- Obesity Prevention Campaigns
- Quantitative
- Social Marketing

ADDITIONAL INFORMATION

olaf.werder@sydney.edu.au

[More information](#)

STEPHEN WHELAN

ASSOCIATE PROFESSOR, SCHOOL OF ECONOMICS

University of Sydney

SUMMARY

Stephen Whelan received his PhD from the University of British Columbia in 2003.

His PhD thesis examined the use of social welfare programs in Canada and their impact on labour market outcomes. Stephen's main areas of interest are social policy and their impact on labour market outcomes.

Presently, Stephen is examining the effect of housing assistance measures on labour market behaviour in Australia with the support of a grant from the Australian Housing and Urban Research Institute.

Collaborative research with Anu Rammohan is considering the effect of child care assistance on the employment decisions of women and their implications for retirement income.



KEY WORDS (POLICY AREAS AND METHODOLOGY EXPERTISE)

- Applied Econometrics
- Applied Economics
- Labour Economics
- Public Policy

ADDITIONAL INFORMATION

stephen.whelan@sydney.edu.au

[More information](#)

KATHERINE WHITE

PROFESSOR, SCHOOL OF PSYCHOLOGY AND COUNSELLING

Queensland University of Technology

SUMMARY

Professor Katherine White is a professor of psychology at the Queensland University of Technology.

Her research interests lie in both correlational and experimental paradigms and social psychology, in particular, attitude-behaviour relations, group norms, prediction of health care behaviours, social identity and altruism/helping behaviours.



KEY WORDS (POLICY AREAS AND METHODOLOGY EXPERTISE)

- Altruism
- Attitude Behaviour Relations
- Health
- Social Identity Theory
- Social Psychology

ADDITIONAL INFORMATION

km.white@qut.edu.au

[More information](#)

DR STUART WHITTEN

GROUP LEADER, ECONOMICS AND FUTURE PATHWAYS

CSIRO

SUMMARY

Dr Stuart Whitten is an environmental and institutional economist with CSIRO Ecosystem Sciences. His particular specialisation is the design and delivery of markets for ecosystem services including auctions and tenders, biodiversity offsets and cap and trade approaches.

Stuart's current research focus is on understanding institution and policy needs to support landscape scale biodiversity and on land management and Great Barrier Reef water quality.



KEY WORDS (POLICY AREAS AND METHODOLOGY EXPERTISE)

- Environment
- Incentives and Institutions
- Market Based Instruments (including auctions and tenders, offsets and cap and trade markets)
- Non-Market Valuation
- Resource Economics

ADDITIONAL INFORMATION

Stuart.whitten@csiro.au

[More information](#)

DR BREANNA WRIGHT

RESEARCH FELLOW, BEHAVIOURWORKS

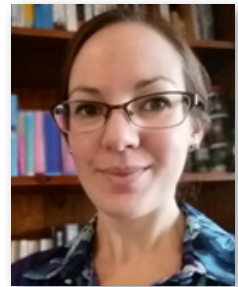
Monash University

SUMMARY

Dr Breanna Wright is a Research Fellow at BehaviourWorks Australia, Monash University.

Her research has focused on health behaviours and health systems, including longitudinal behavioural patterns and health policy implications. With a particular focus on unpacking problems and behavioural drivers, Breanna has worked on projects from healthy dining, reducing inappropriate calls to Triple Zero, young people's experiences at work and livestock biosecurity on farms.

Breanna also has experience in synthesising research evidence, both in the traditional systematic review format and the emerging format of rapid reviews, getting timely high quality evidence in front of policy makers.



KEY WORDS (POLICY AREAS AND METHODOLOGY EXPERTISE)

- Health Behaviours
- Health Systems
- Rapid Review
- Systematic Review

ADDITIONAL INFORMATION

breanna.wright@monash.edu

[More information](#)

ERTE XIAO

ASSOCIATE PROFESSOR, DEPARTMENT OF ECONOMICS

Monash University

SUMMARY

Erte Xiao is an Associate Professor in the Department of Economics. Her research applies experimental methods to understand how incentives and social norms influence economic behavior.

Before joining Monash University, she was an assistant professor at Carnegie Mellon University and a post-doctoral fellow at University of Pennsylvania.



KEY WORDS (POLICY AREAS AND METHODOLOGY EXPERTISE)

- Behavioural Economics
- Experimental Economics
- Incentives
- Social Norms

ADDITIONAL INFORMATION

Erte.Xiao@monash.edu

[More information](#)

